

Note:Because of printing limitations, product colour shown on this product manual may differ from the actual product. In such a case, the actual colour shall always prevail.

ASA<sup>TM</sup> TILES  
Since 1973



ASA Building Materials (HK) Limited  
Unit 303, 3/F, iHome Centre, 369 Lockhart Road, Wan Chai, Hong Kong  
Phone: +852 2152 1900  
Email: sales@asatiles.hk.com  
Website: www.asatiles.hk.com





# ABOUT ASA TILES

*SINCE 1973*

ASA Tiles is one of the most renowned international brands in the ceramic and porcelain tiles industry since 1973 when its first batch of artistic 3D ceramic tiles was exposed to the world. The popularity of our brand has been growing rapidly worldwide in recent decades along with the growth of our production capacity, enabling our wider scope of services to our global customers. In 2016, ASA Group Holding Limited has a capital exceeding US\$900 millions. We have been persistently focusing on never-ending, inside out management, and technology improvement schemes to satisfy our every customer. Recently, various categories of ASA Tiles products are supplied globally to over 40 countries and different regions.

In the realisation processes and efforts to meet the company missions, we have put heavy efforts in our modern product design and development collaborated with Italian designers in our Milan office in 2016. We have been increasing our production capacity with confidence to our future demanding customers. We have further invested over RMB 150,000,000 worth of the first batch of state-of-the-art production line and equipment in our Hubei plant. Furthermore, the proprietary formulations and production knowhow of ASA Tiles made our products stand at the leading edge in the industry.

We make ASA Tiles different by our innovative high-end mass production technology to characterise our tiles with Reduced Glares at 55°, 3D Touchable Marble-like Texture, Full-body specification, and the largest single piece tile size. ASA Tiles is now the only producer in China with the capability to produce 3200 mm x 1600 mm size marble tiles in 2017. In addition to cycle training of our professional sales forces and the adaptation of sophisticated ERP system, we made our motivation and enhancements schemes become inseparable parts of our integral marketing and business strategy. ASA Tiles is well prepared in advance to satisfy our valuable customers of today and the future, nationwide and internationally, in public accommodations and private living spaces.

*HUBEI PLANT*

ASA Tiles are produced in three manufacturing plants in mainland China, which are located in Zibo City of Shangdong Province, Qingyuan City of Guangdong Province, and Xianning City of Hubei Province. After the third investment to further enhance both our production capacity and capability in our Shandong and Guangdong Plants, our Hubei Plant will involve a total investment of over RMB 2 billion in total. The plant occupies a total area exceeding 1,330,000 square metres, which is adequate for the erection of another 18 state-of-the-art production lines to generate annually a RMB 8 billion worth of production output. In 2016, the plant achieved a productivity level of RMB 1.2 million per headcount on average. At present, it is the biggest, in scale, tile manufacturing plant in Central China and one of the biggest among similar production scales all over the world.

Our proprietary technical knowhow leads to the re-definition of marble tiles in the industry. In February 2017, the first production line for extra-large size tiles started its normal operations. At no time, it stood in China as the only capacity to mass produce extra-large size ceramic and porcelain tiles.

Our Hubei Plant has been stringently carrying out production activities and missions "intelligently + innovatively". Employing robotic production approaches, with the application and enhancement of our eight technical knowhow patents, we are prepared to lead the industry into the era of Industry 4.0 scheme to meet the rapidly growing demands of high-end tiles by the younger generation of high-end product pursuers.



*We sampled prestige wood,  
chose the most elegant and unforgettable cross-cut, restored the fabric onto our Wood Tiles.*

*Unlike natural wood, these art pieces are durable and easy to maintain.*

*ASA Wood Tiles are with top and consistent quality,  
versatile to fit in personalised interior design.*

*TILES*



# FOSTER

SIZE: 225x900mm   600x1200mm   225x1800mm   200x1200mm



EGFT12601R/P(X)  
600x1200mm



EGFT12602R/P(X)  
600x1200mm



EGFT92501R/P(X)  
225x900mm



EGFT92502R/P(X)  
225x900mm



EGFT12201R/P(X)  
200x1200mm



EGFT12202R/P(X)  
200x1200mm



EGFT18201R/P(X)  
225x1800mm



EGFT18202R/P(X)  
225x1800mm

Surface: **R** =ROUGH   **P** =POLISHED

**HD** 1080P High Definition Pattern   **+** Extra Hardness   **+** Resistant to Stains   **+** High Slip Resistance

**+** High Damage Resistance   **90°** Rectified   **+** Waterproof   **+** High Corrosive Resistance





# FOSTER

SIZE: 225x900mm 600x1200mm 225x1800mm 200x1200mm



EGFT12603R/P(X)  
600x1200mm



EGFT12604R/P(X)  
600x1200mm



EGFT12605R/P(X)  
600x1200mm



EGFT92503R/P(X)  
225x900mm



EGFT92504R/P(X)  
225x900mm



EGFT92505R/P(X)  
225x900mm



EGFT12203R/P(X)  
200x1200mm



EGFT12204R/P(X)  
200x1200mm



EGFT12205R/P(X)  
200x1200mm



EGFT18203R/P(X)  
225x1800mm



EGFT18204R/P(X)  
225x1800mm



EGFT18205R/P(X)  
225x1800mm

Surface: **R** =ROUGH **P** =POLISHED

- High Definition Pattern
- Extra Hardness
- Resistant to Stains
- High Slip Resistance
- High Damage Resistance
- Rectified
- Waterproof
- High Corrosive Resistance





# BRAZIL MAHOGANY

SIZE: 900X900mm 150X900mm



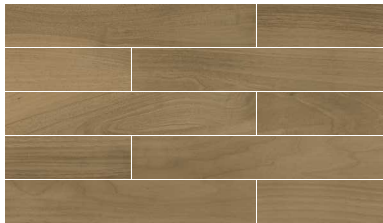
WBH900061X  
900x900mm



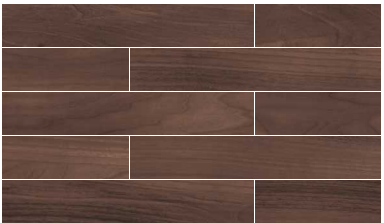
WBH900071X  
900x900mm



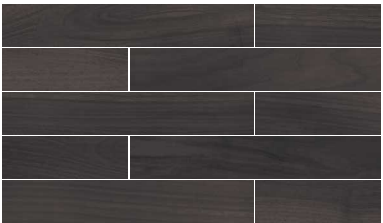
WBH900091X  
900x900mm



WBH915061X  
150x900mm



WBH915071X  
150x900mm



WBH915091X  
150x900mm

- HD  
1080P

High Definition  
Pattern
- Extra  
Hardness
- Resistant  
to Stains
- High Slip  
Resistance
- High Damage  
Resistance
- Rectified
- Waterproof
- High Corrosive  
Resistance





# AFRICAN YELLOW SANDAL

SIZE: 900X900mm 150X900mm



WFT900021X  
900x900mm



WFT900022X  
900x900mm



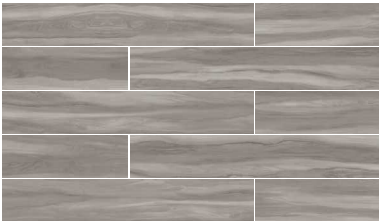
WFT900051X  
900x900mm



WFT915021X  
150x900mm



WFT915022X  
150x900mm



WFT915051X  
150x900mm



HWH900021X  
900x900mm



HWH900022X  
900x900mm

- High Definition Pattern
- Extra Hardness
- Resistant to Stains
- High Slip Resistance
- High Damage Resistance
- Rectified
- Waterproof
- High Corrosive Resistance







# RUSTIC

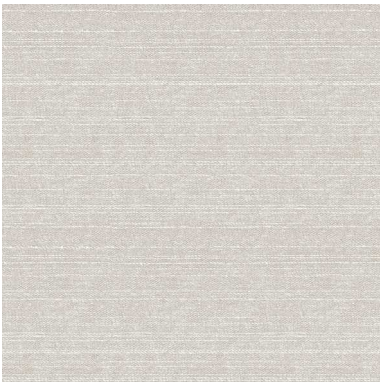
*ASA Rustic Tiles simulates a wide variety of fabrics and textures.*  
*The rustic design is in line with modern sense of beauty.*  
*We provide agile solution to demonstrate your personal taste in design and decoration.*

TILES



# LOOM

SIZE: 300x600mm 600x600mm



EGBR601S(X)  
600x600mm



EGBR601D1(X)  
600x600mm



EGBR6301S(X)  
300x600mm



EGBR601D2(X)  
600x600mm

Surface: **S** =STRUCTURE

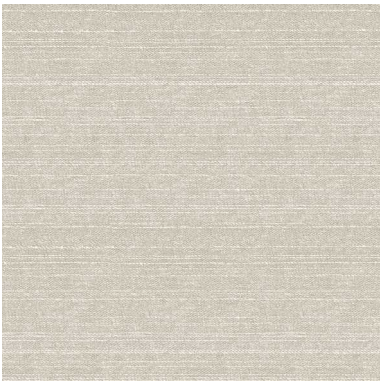
- High Definition Pattern
- Extra Hardness
- Resistant to Stains
- High Slip Resistance
- High Damage Resistance
- Rectified
- Waterproof
- High Corrosive Resistance





# LOOM

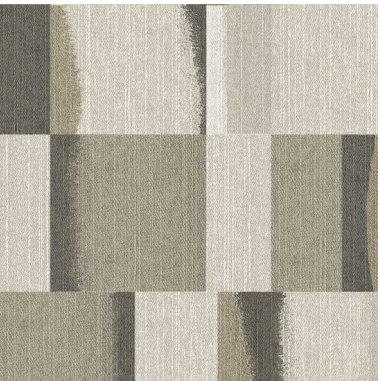
SIZE: 300x600mm 600x600mm



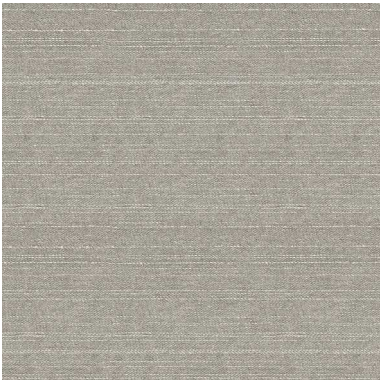
EGBR602S(X)  
600x600mm



EGBR602D1(X)  
600x600mm



EGBR602D2(X)  
600x600mm



EGBR603S(X)  
600x600mm



EGBR603D1(X)  
600x600mm



EGBR603D2(X)  
600x600mm



EGBR302S(X)  
300x600mm



EGBR302S(X)  
300x600mm

Surface: **S** =STRUCTURE

- High Definition Pattern
- Extra Hardness
- Resistant to Stains
- High Slip Resistance
- High Damage Resistance
- Rectified
- Waterproof
- High Corrosive Resistance





# ANCIENT STONE

SIZE: 600x600mm



RGL6020X  
600x600mm



RGL6050X  
600x600mm



RGL6070X  
600x600mm



RGL6020-HP1X  
600x600mm



RGL6050-HP1X  
600x600mm



RGL6070-HP1X  
600x600mm

- HD  
1080P

High Definition  
Pattern
- Extra  
Hardness
- Resistant  
to Stains
- High Slip  
Resistance

High Damage  
Resistance

Rectified

Waterproof

High Corrosive  
Resistance





# FRENCH CLASSICISM

SIZE: 600x600mm



RFG6022X  
600x600mm



RFG6052X  
600x600mm



RFG6072X  
600x600mm



RFG6022-HP1X  
600x600mm



RFG6052-HP1X  
600x600mm



RFG6072-HP1X  
600x600mm

- HD  
1080P

High Definition  
Pattern
- Extra  
Hardness
- Resistant  
to Stains
- High Slip  
Resistance
- High Damage  
Resistance
- Rectified
- Waterproof
- High Corrosive  
Resistance

# FRENCH CLASSICISM

SIZE: 600x600mm



RFG6092X  
600x600mm



RFG6092-HP1X  
600x600mm



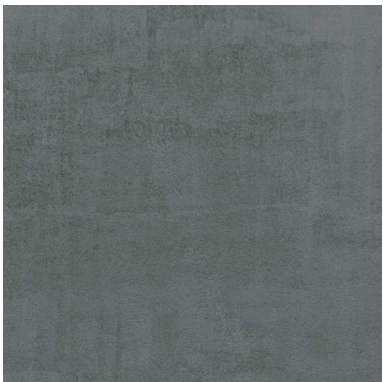


# PURE MELBOURNE

SIZE: 600x600mm



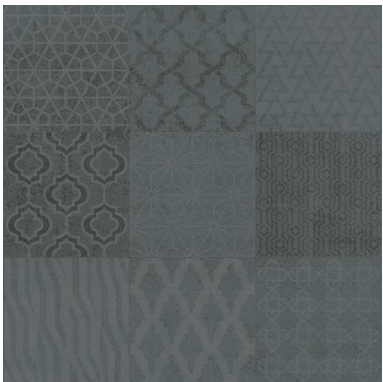
RML6051X  
600x600mm



RML6055X  
600x600mm



RML6051-HP1X  
600x600mm



RML6055-HP1X  
600x600mm

- HD  
1080P

High Definition  
Pattern
- Extra  
Hardness
- Resistant  
to Stains
- High Slip  
Resistance
- High Damage  
Resistance
- Rectified
- Waterproof
- High Corrosive  
Resistance





# BORDEAUX

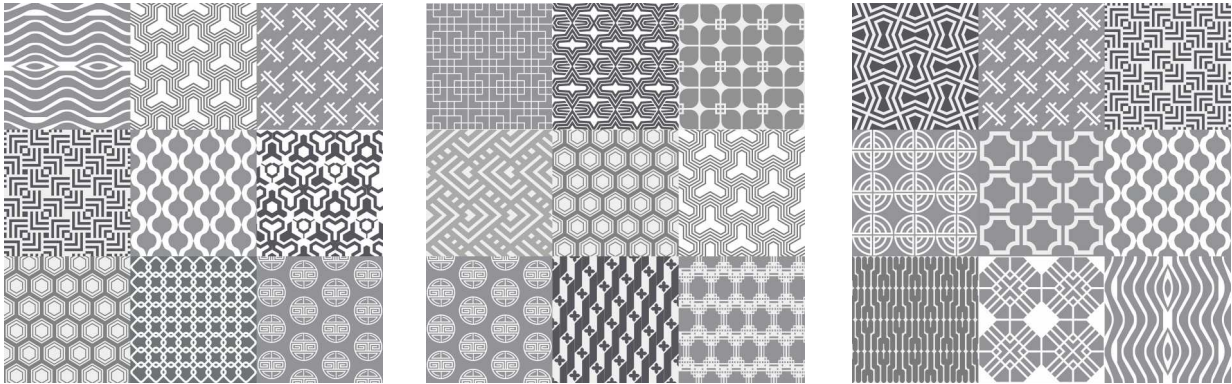
SIZE: 600x600mm



HFB6030X  
600x600mm

# PATRAS

SIZE: 600x600mm



HFP6030X  
600x600mm

- HD  
1080P

High Definition  
Pattern
- +

Extra  
Hardness
- +

Resistant  
to Stains
- ↑

High Slip  
Resistance
- +

High Damage  
Resistance
- 90°

Rectified
- +

Waterproof
- +

High Corrosive  
Resistance





# INK MELODY

SIZE: 600x600mm



GLK6020X  
600x600mm



GLK6020-HP1X  
600x600mm



GLK6020-HP2X  
600x600mm



GLK6020-HP3X  
600x600mm



GLK6050X  
600x600mm



GLK6050-HP1X  
600x600mm



GLK6050-HP2X  
600x600mm



GLK6050-HP3X  
600x600mm

- **HD 1080P**  
High Definition Pattern
- **Extra Hardness**
- **Resistant to Stains**
- **High Slip Resistance**
- **High Damage Resistance**
- **Rectified**
- **Waterproof**
- **High Corrosive Resistance**





# THE PETRA

SIZE: 600x600mm



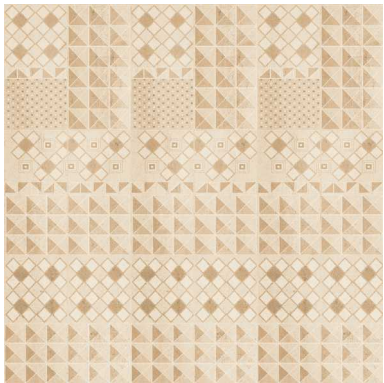
GLA6020X  
600x600mm



GLA6020-HP1X  
600x600mm



GLA6020-HP2X  
600x600mm



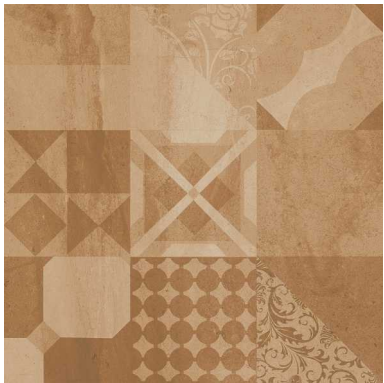
GLA6020-HP3X  
600x600mm



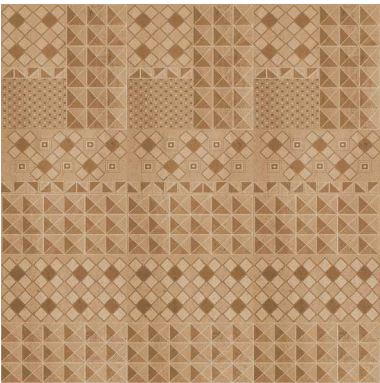
GLA6070X  
600x600mm



GLK6070-HP1X  
600x600mm



GLA6070-HP2X  
600x600mm



GLA6070-HP3X  
600x600mm

- High Definition Pattern
- Extra Hardness
- Resistant to Stains
- High Slip Resistance
- High Damage Resistance
- Rectified
- Waterproof
- High Corrosive Resistance





# FOREST BIRCH

SIZE: 600x600mm



SLS6020X  
600x600mm



SLS6020-HP1X  
600x600mm



SLS6020-HP2X  
600x600mm



SLS6050X  
600x600mm



SLS6050-HP1X  
600x600mm



SLS6050-HP2X  
600x600mm

- HD  
1080P

High Definition  
Pattern
- +

Extra  
Hardness
- +

Resistant  
to Stains
- +

High Slip  
Resistance
- +

High Damage  
Resistance
- 90°

Rectified
- +

Waterproof
- +

High Corrosive  
Resistance





# ALPINE RELICS

SIZE: 600x600mm



SLK6050X  
600x600mm



SLK6050-HP1X  
600x600mm



SLK6050-HP2X  
600x600mm



SLK6050-HP3X  
600x600mm

- HD  
1080P

High Definition  
Pattern
- Extra  
Hardness
- Resistant  
to Stains
- High Slip  
Resistance
- High Damage  
Resistance
- Rectified
- Waterproof
- High Corrosive  
Resistance





# BRUSHED WOOD

SIZE: 600x600mm



SL6050AX  
600x600mm



SL6050BX  
600x600mm



SL6050CX  
600x600mm



SL6050-YD1X  
600x100mm

# ST. MARK GRAVEL

SIZE: 600x600mm



SK6003BX  
600x600mm



SK6003DX  
600x600mm

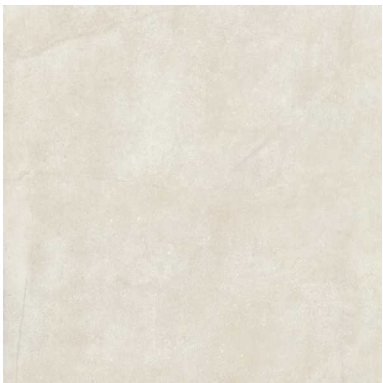
- High Definition Pattern
- Extra Hardness
- Resistant to Stains
- High Slip Resistance
- High Damage Resistance
- Rectified
- Waterproof
- High Corrosive Resistance

# ROYAL RED

SIZE: 600x600mm



FN6050AX  
600x600mm



FN6050BX  
600x600mm



FN6050CX  
600x600mm



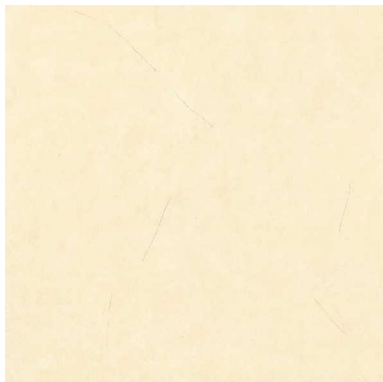
FN6050DX  
600x600mm



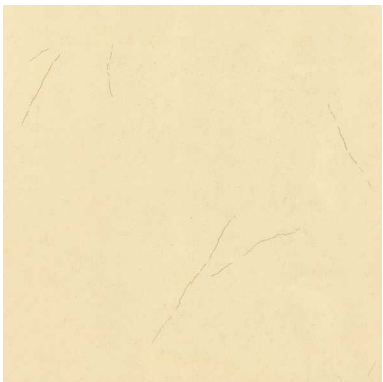


# CLOUD-SHADOW STONE

SIZE: 600x600mm



SK6050AX  
600x600mm



SK6050BX  
600x600mm



SK6050HX  
600x600mm



SK6050IX  
600x600mm

# IDYLIC SCENE

SIZE: 300x300mm



T33401X  
300x300mm



T33402X  
300x300mm



T33901X  
300x300mm



T33902X  
300x300mm



High Definition  
Pattern



Extra  
Hardness



Resistant  
to Stains



High Slip  
Resistance



High Damage  
Resistance



Rectified



Waterproof



High Corrosive  
Resistance



# PROJECT HIGHLIGHTS



Burj Khalifa Tower



Shanghai Tower



The Oriental Pearl Radio & TV Tower



Goldin Finance 117



Shanghai Maglev Train Station



China Central Television Headquarter



The Great Hall of the People



Peking University



The University of Hong Kong



The Grand Hotel, Taipei



Singapore Changi Airport

# SPECIFICATION



## High Definition Pattern

This tile is printed in high definition 1080p.



## Extra Hardness

This tile experienced high-temperature firing and 5-time polishing. Its Mohs hardness is around 6, higher than the national standard. It is more resistant to abrasion.



## High Slip Resistance

This tile has high slip resistance, CoF ≥ 0.60 (ASTM C1028).



## Rectified

This tile has been rectified, deviation ≤ 0.5% (ASTM C499, EN ISO 10545-2), to ensure the joints are consistently spaced.



## High Damage Resistance

This tile was fired at high temperature. It has high damage resistance, ≥1000 N (ASTM C648, EN ISO 10545-4).



## Waterproof

Water absorption of this tile is ≤ 0.1% (ASTM C373, EN ISO 10545-3), lower than the national standard (≤ 0.5%).



## High Corrosive Resistance

This tile is resistant to corrosion of various household chemicals, acids and alkalis (ASTM C1378, EN ISO 10545-13).



## Resistant to Stains

Imported high-temperature nano ceramic glaze is applied onto this tile. It has minimised porosity and high stain resistance to grout, washable and waterproof inks, and chemicals (ASTM C1378, EN ISO 10545-14).

# CERTIFICATIONS

